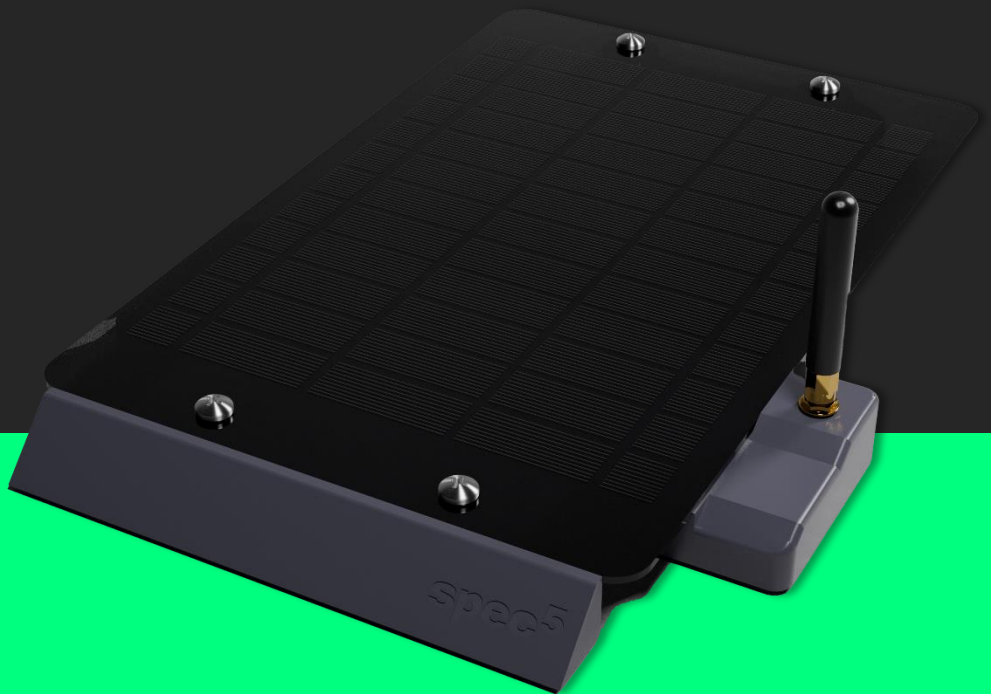


spec<sup>5</sup>

# SpecFive Voyager

---

## User Guide



**WARNING: ALWAYS ATTACH THE INCLUDED ANTENNA BEFORE POWERING ON THE SPECFIVE VOYAGER. POWERING IT ON WITHOUT THE ANTENNA CAN CAUSE PERMANENT DAMAGE TO THE DEVICE.**

# 1. Getting Started

## What's Included

- S5 Voyager Unit
  - 4 Neodymium Magnet Pads
  - 6W Solar Panel
  - ASA Housing w/ waterproofing sealant
- 8cm LoRa Glue Stick Antenna 915 mHz
- User Guide

## Requirements

- Smartphone or tablet with the Meshtastic app installed
- Optional: Additional Meshtastic devices for network expansion

# 2. Setting Up the Device

**Step 1: Ensure the antenna is connected to the Voyager before powering it on**

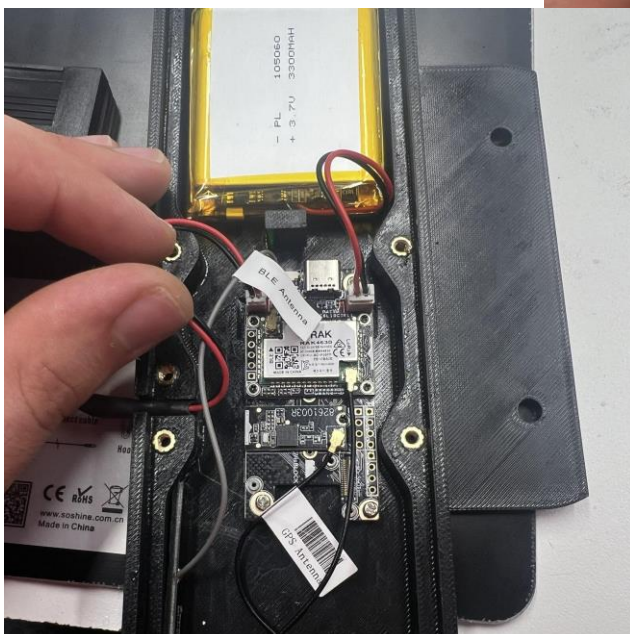
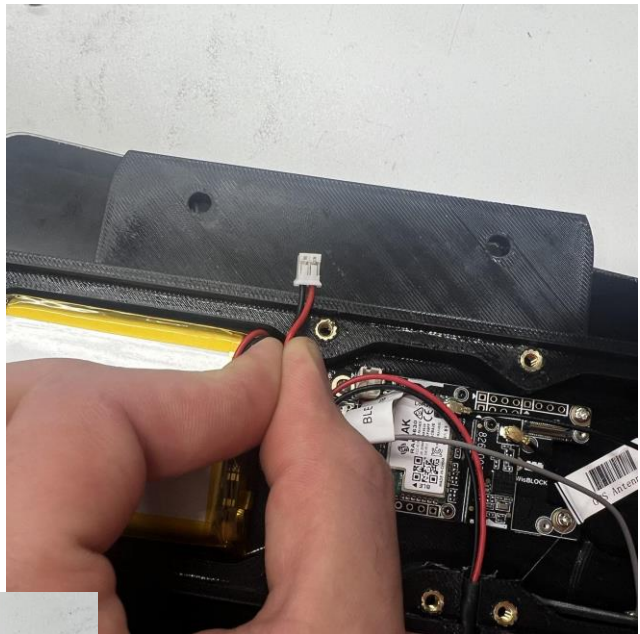


## Step 2: Take the bottom cover off

1. After unscrewing the fasteners, carefully lift the bottom cover to avoid damaging internal components that connect the front and back plates

**a. Note:** The mix of glossy and matte surface finishes on the internal faces of the enclosure are a remnant from the application of the waterproofing solution we use.

## Step 3: Plug the battery into the main board



1. The main board will power on and begin flashing green intermittently after a few seconds
  - a. When the board is receiving solar power the led on the board will turn solid red
2. Ensure that battery polarity is the same as the picture shown

#### **Step 4: Screw the bottom cover onto the Voyager Unit**

1. Ensure the gasket is seated correctly into the groove on the back cover



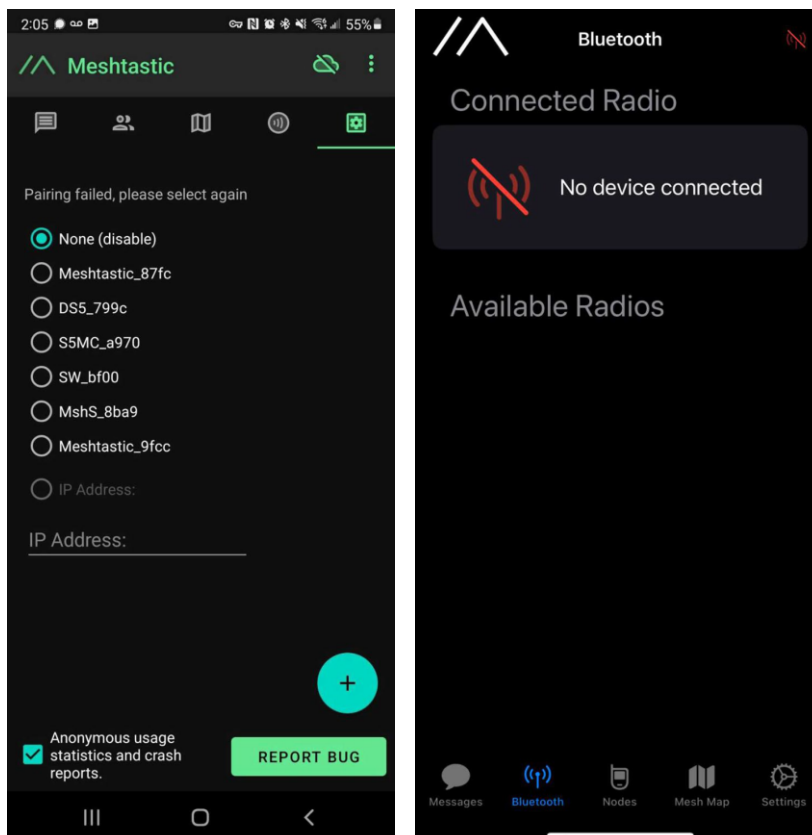
2. Tighten the screws evenly to ensure the bottom cover sits flush on the Voyager unit

### Step 5: Install the Meshtastic App

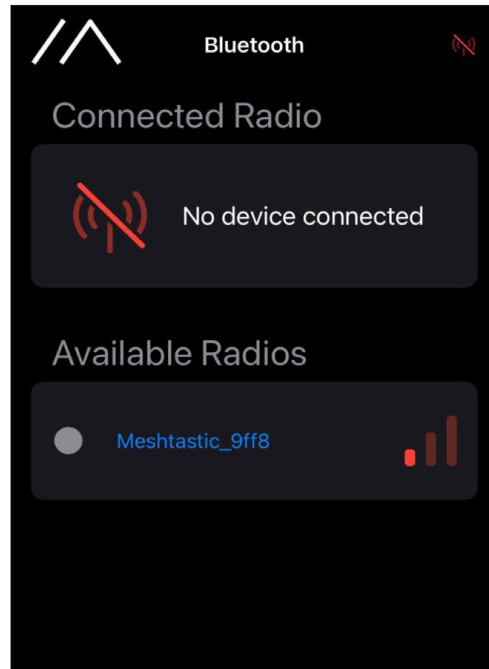
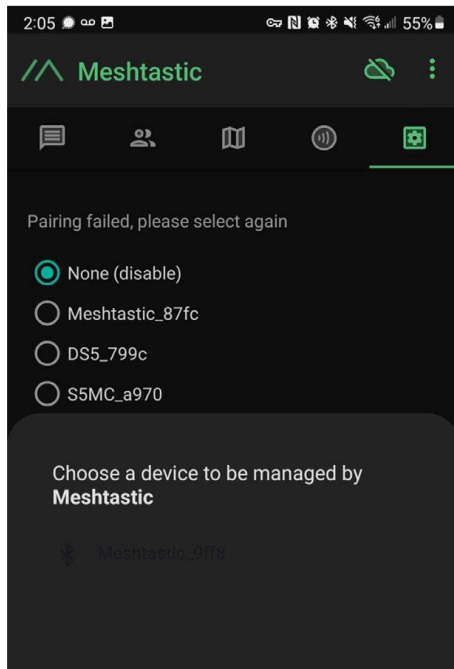
1. Download the Meshtastic app from the Google Play Store or Apple App Store.
2. Open the app and follow the prompts for general user instructions

### Step 6: Pair the Device with the App

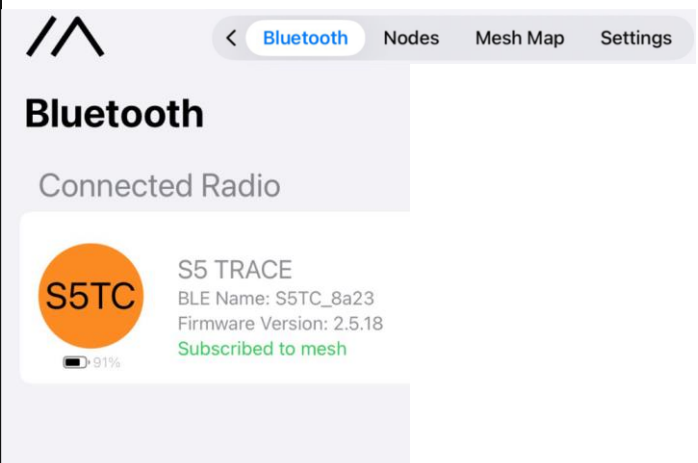
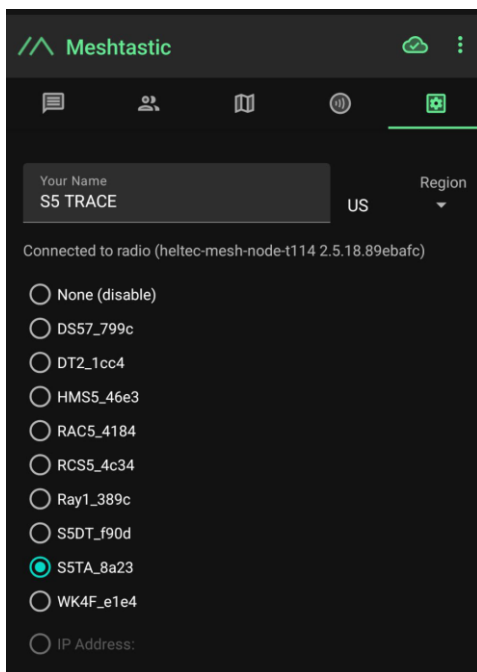
1. Ensure the battery is plugged into the board and it's flashing green intermittently. This means that the device is powered on.
2. Open the Meshtastic app



3. Select your device from the list of available devices. The Voyager will show up as S5VY-####(the last 4 digits are randomized)



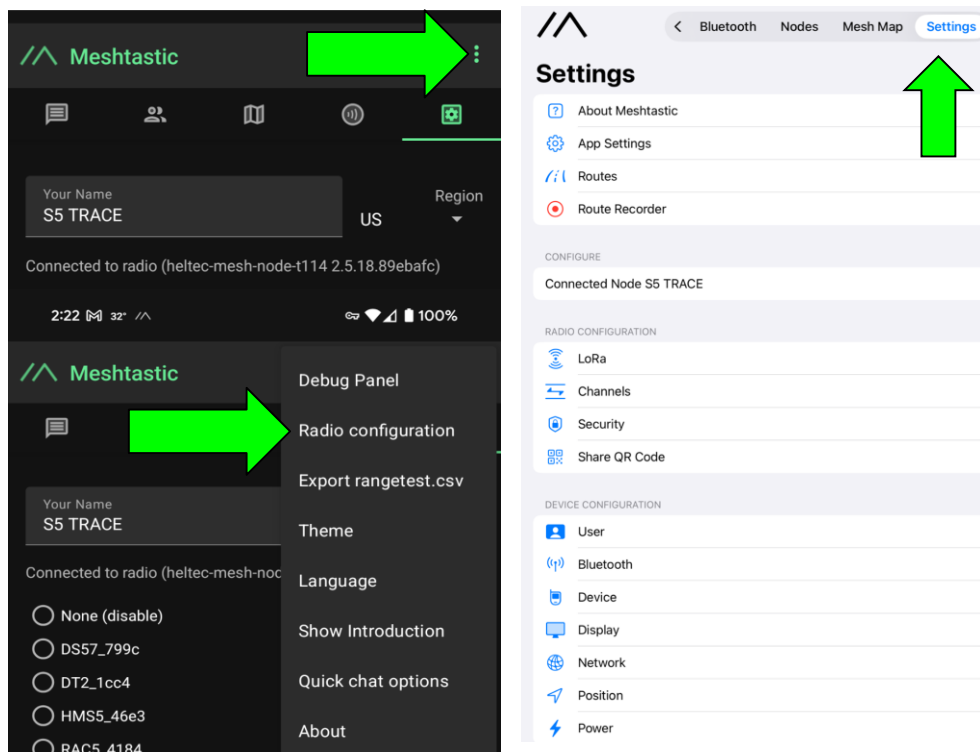
4. Enter the device's pin when prompted, which is by default set to: **123456**
5. Your Device is now paired to the app for further configuration



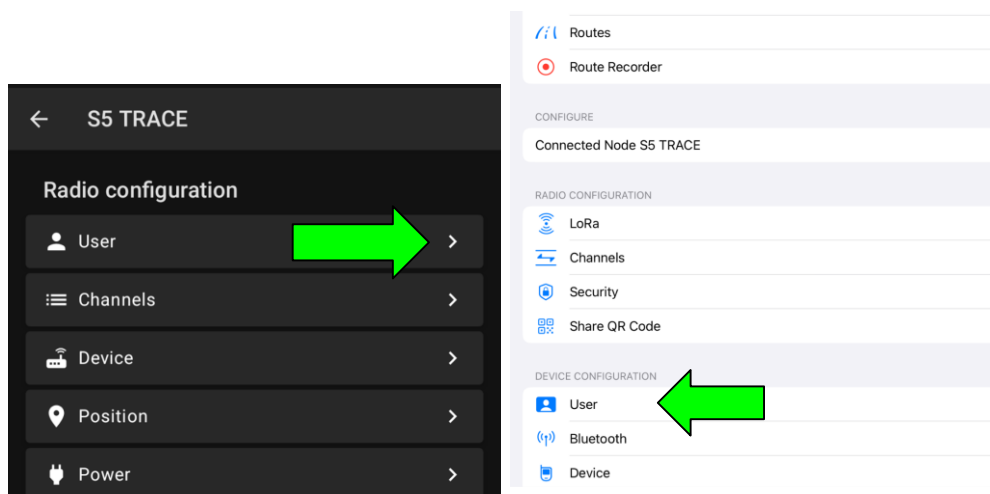
## Optional: Changing the Device Name

If you would like to create a custom name for your Voyager in the Meshtastic app, then follow the instructions below:

1. Find the Radio Configuration/Setting Tab on your app
  - a. Android: Click the 3 vertical dots on the top right and select Radio Configuration
  - b. iOS: Select the Settings tab

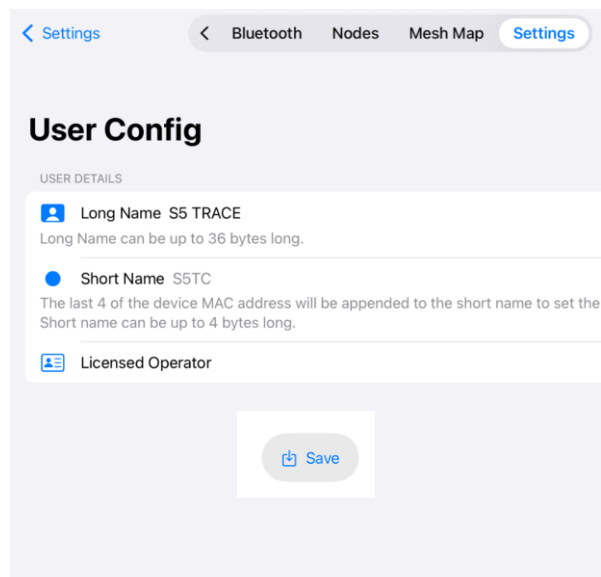
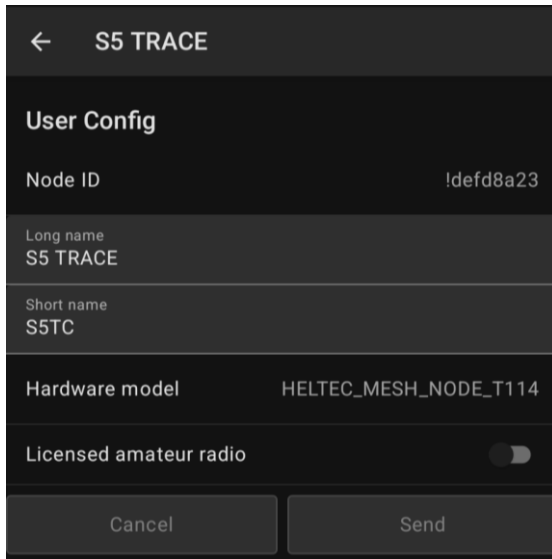


2. Go to the User tab





- Update the Long and Short name. Long Name can be up to 30 characters including emojis. Short Name can be up to 4 characters, numbers and letters only.



- Once you have updated the device name to your desired name, click Send(Android) or Save(iOS) and the device will reboot.

### Step 7: Attach the Voyager to your Vehicle

- Find a smooth, flat surface on the roof of your vehicle
- Make sure that the surface is free of dust and debris that may interfere with the magnetic connection between the Voyager and the roof
- Place the Voyager onto the roof with the Spec5 logo facing forward
  - Optional: Use a paint protection film (PPF) if you are concerned about damage to the paint on the roof of your vehicle

## You're Good to Go!

### Support and Contact Information

If you experience issues or have questions, contact us at:

- Email: [general@specfive.com](mailto:general@specfive.com)
- Website: [www.specfive.com](http://www.specfive.com)